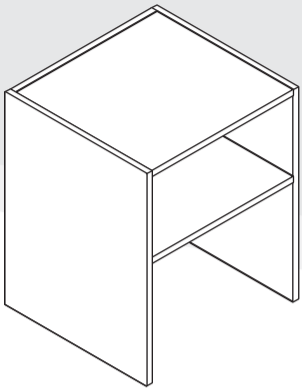


ALSO AVAILABLE IN THE  
SELF ASSEMBLY RANGE

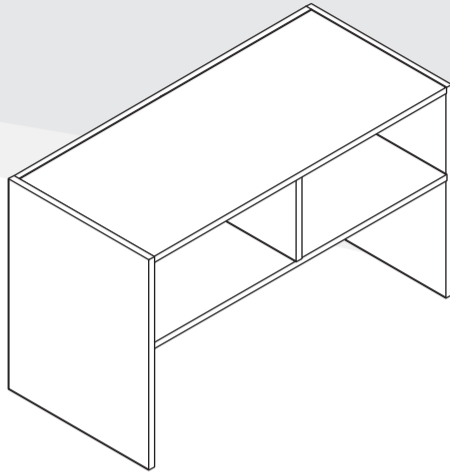
# 15 Tier Card Rack

## Self Assembly in Ivory (MFC)

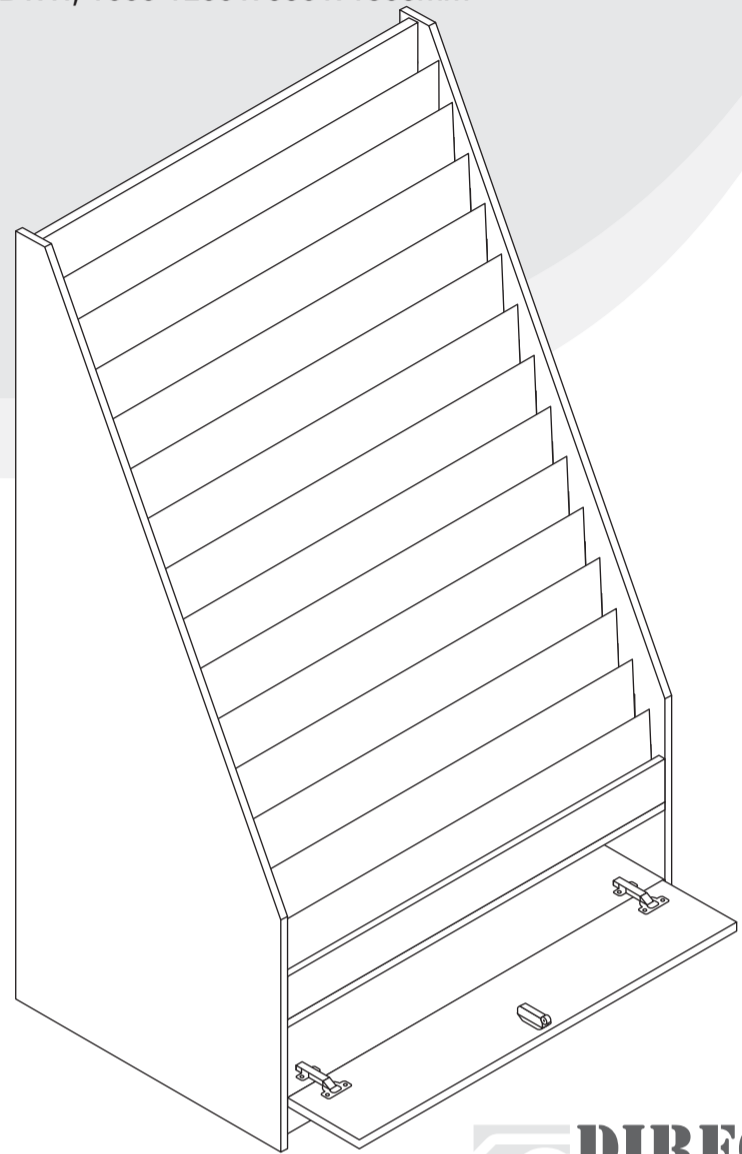
(W x D x H) 1000-1200 x 550 x 1380mm



**TILL POINT (600mm)**  
Self Assembly Counter in Ivory (MFC)  
(W x D x H) 600 x 600 x 900mm



**TILL POINT (1200mm)**  
Self Assembly Counter in Ivory (MFC)  
(W x D x H) 1200 x 600 x 900mm



**DIRECT SHOPFITTINGS**

Park View, North Street Langwith,  
Mansfield Nottinghamshire NG20 9BN.

T: 0845 4001040

F: 01623 741505

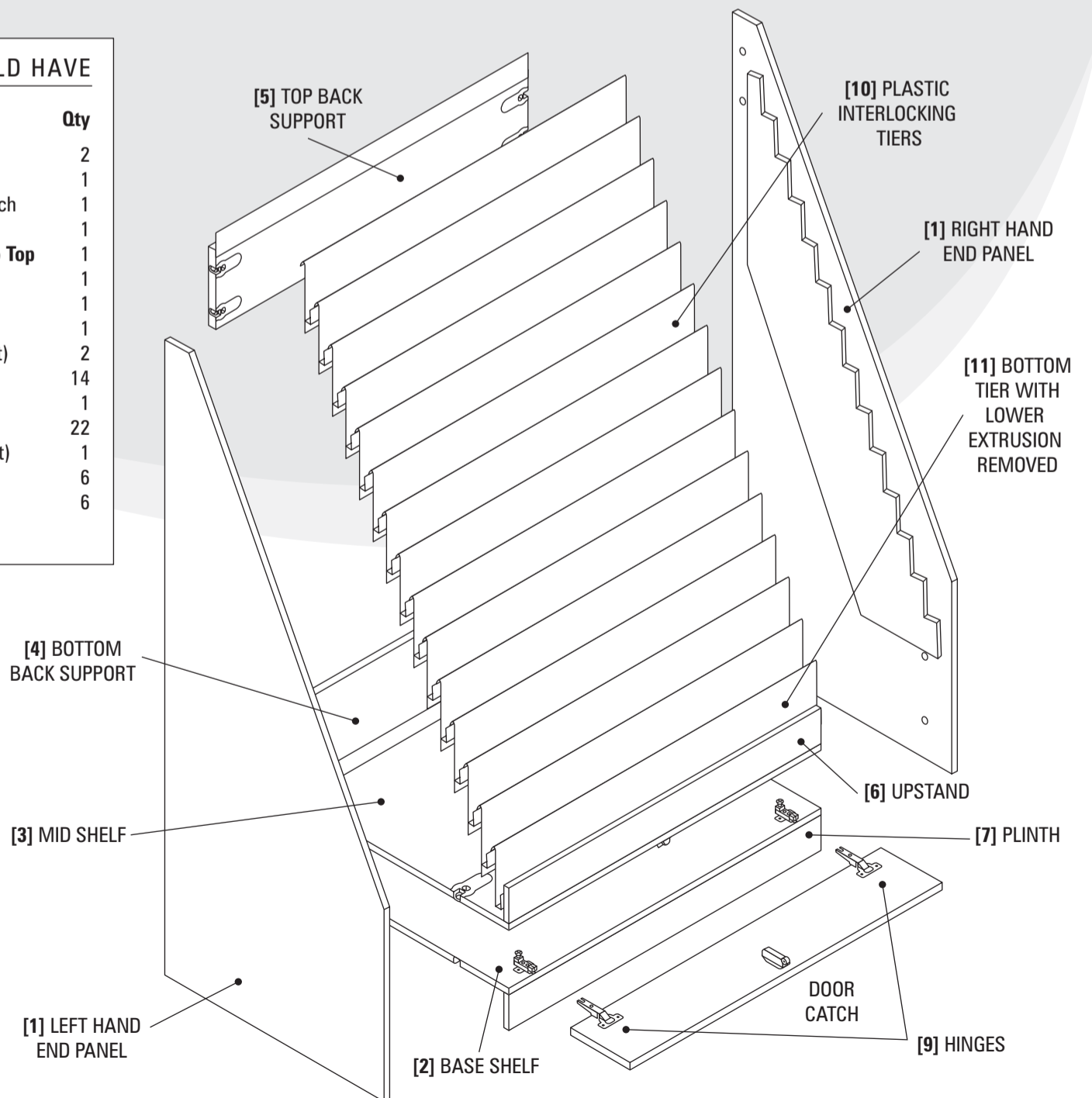
E: sales@shop-equip.com

W: <http://www.directshopfittings.co.uk>

**DIRECT SHOPFITTINGS**

### YOUR CHECKLIST - WHAT YOU SHOULD HAVE

Item No.	Description	Qty
[1]	End Panels (Left Hand & Right Hand)	2
[2]	Base Shelf	1
[3]	Mid Shelf - NB Locating Holes for Door Catch	1
[4]	Bottom Back Support	1
[5]	Top Back Support - NB Extrusion Fitted to Top	1
[6]	Upstand	1
[7]	Plinth	1
[8]	Door	1
[9]	Hinges and Fixings (8 Screws for Hinge Kit)	2
[10]	Plastic Interlocking Tiers	14
[11]	Bottom Plastic Tier	1
	Metal Pins	22
	Door Catch Kit (6 Screws for Door Catch Kit)	1
	Plastic Hole Caps for Rear of Top Support	6
	Screws for Fixing Bottom Support	6

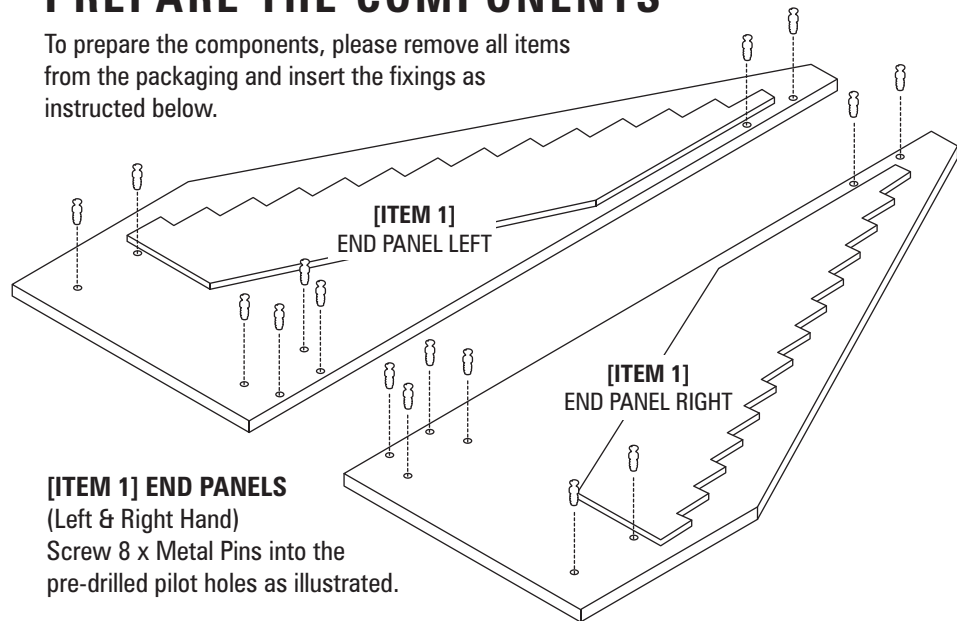


**SHOPEQUIP**  
quality equipment direct

1.

## PREPARE THE COMPONENTS

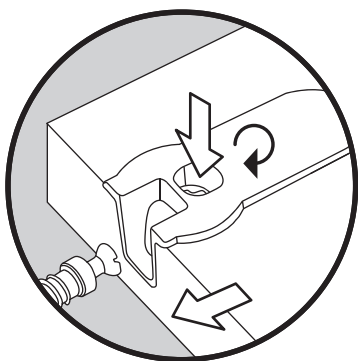
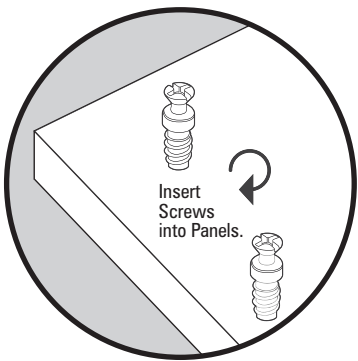
To prepare the components, please remove all items from the packaging and insert the fixings as instructed below.



### [ITEM 1] END PANELS

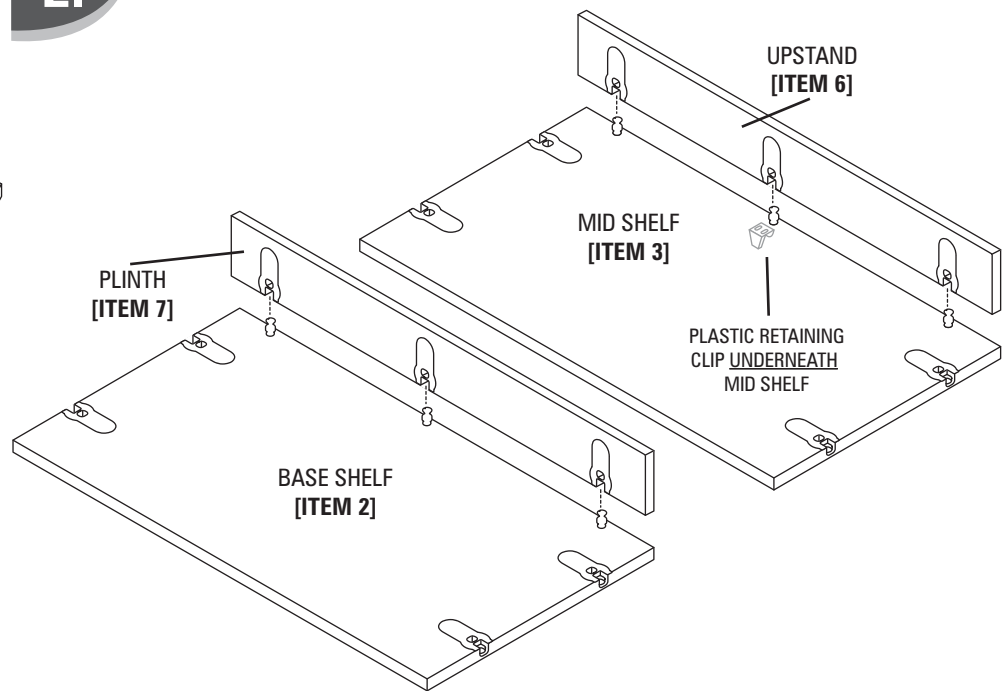
(Left & Right Hand)

Screw 8 x Metal Pins into the pre-drilled pilot holes as illustrated.



Join together by taking your Phillips screwdriver and tighten the screws within each Metal Cam in a Clockwise direction.

2.



[ITEM 2] **BASE SHELF** Screw 3 x Metal Pins into the pre-drilled pilot holes.

[ITEM 6] **UPSTAND** Take the **UPSTAND** and attach it to the **MID SHELF [ITEM 3]** ensuring all Metal Pins are securely located.

Repeat these steps for the **BASE SHELF [ITEM 2]** & **[ITEM 7]**.

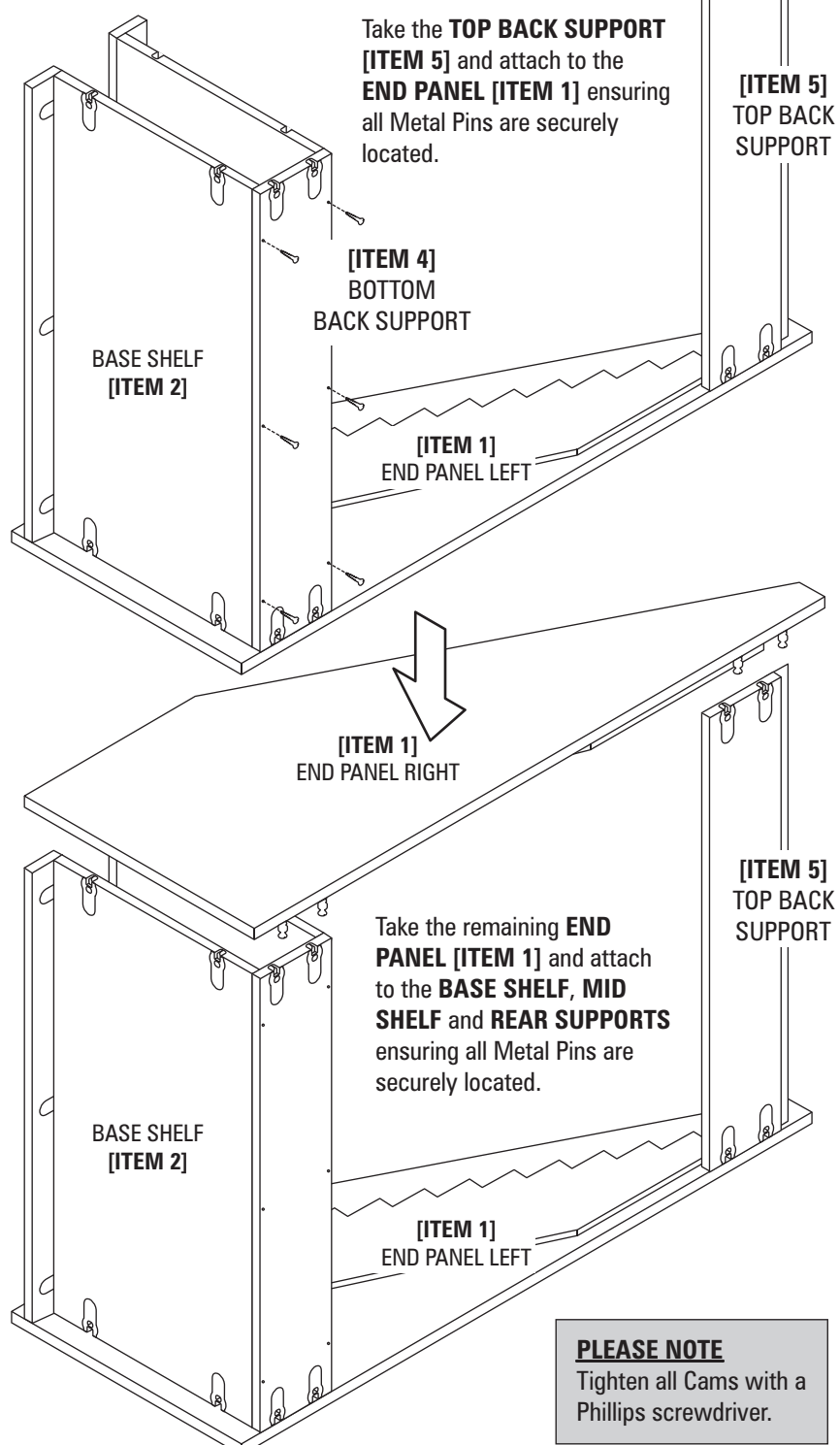
**NB:** Fit the Plastic Retaining Clip of the Door Catch to the underside of the **MID SHELF [ITEM 3]** using the pre-drilled pilot holes.

3.

## ASSEMBLING YOUR CARD RACK

Take the **END PANEL [ITEM 1]** and attach the **MID SHELF** (complete with **UPSTAND**) and the **BASE SHELF** (complete with **PLINTH**) ensuring all Metal Pins are securely located.

Take the **BOTTOM BACK SUPPORT [ITEM 4]** and attach to the rear of the **MID SHELF [ITEM 3]** and **BASE SHELF [ITEM 2]** with the screws provided ensuring all Metal Pins are securely located.



Take the **TOP BACK SUPPORT [ITEM 5]** and attach to the **END PANEL [ITEM 1]** ensuring all Metal Pins are securely located.

[ITEM 5] TOP BACK SUPPORT

[ITEM 4] BOTTOM BACK SUPPORT

BASE SHELF [ITEM 2]

[ITEM 1] END PANEL LEFT

[ITEM 1] END PANEL RIGHT

[ITEM 5] TOP BACK SUPPORT

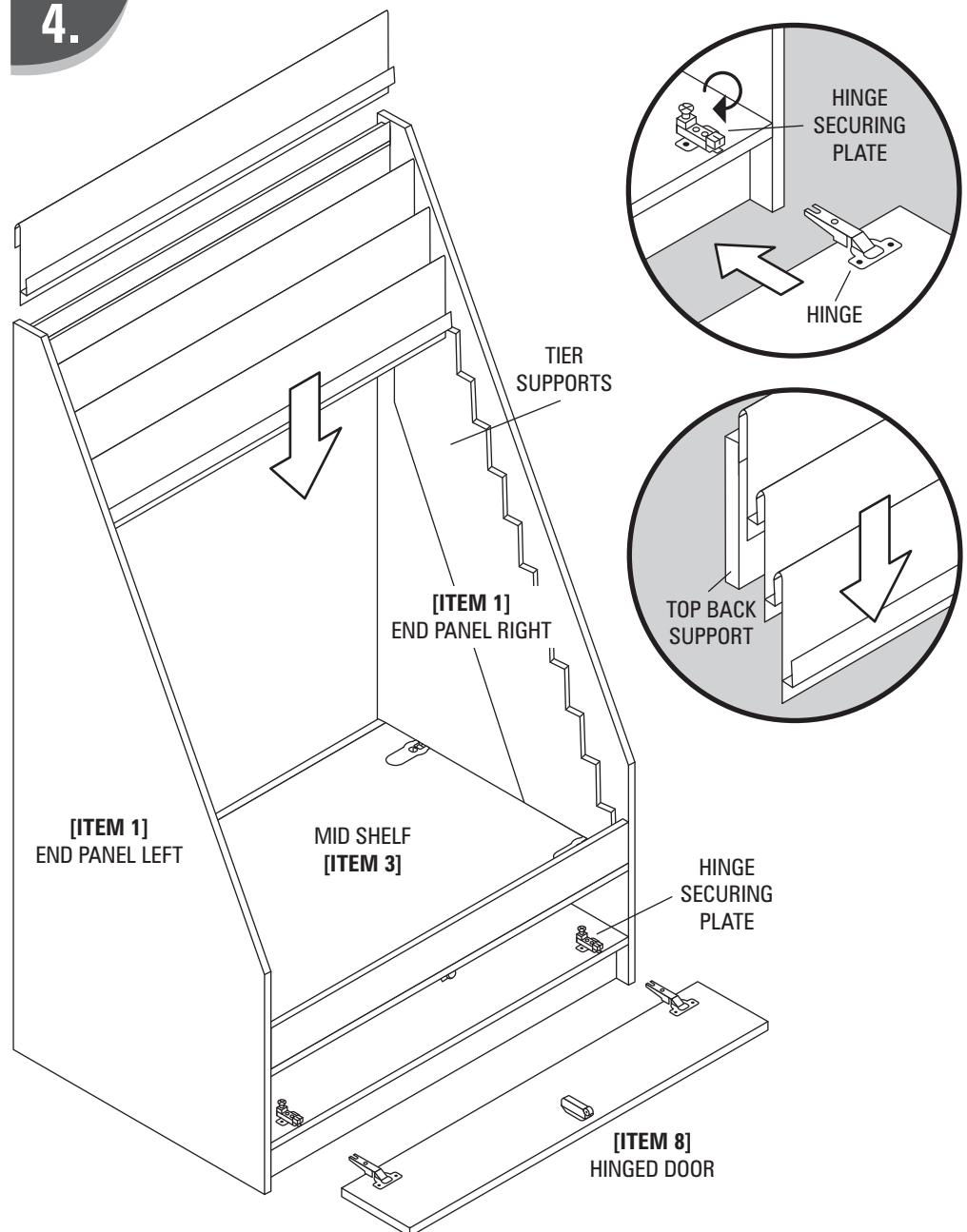
BASE SHELF [ITEM 2]

[ITEM 1] END PANEL LEFT

### PLEASE NOTE

Tighten all Cams with a Phillips screwdriver.

4.



HINGE SECURING PLATE

HINGE

TIER SUPPORTS

[ITEM 1] END PANEL RIGHT

[ITEM 1] END PANEL LEFT

MID SHELF [ITEM 3]

HINGE SECURING PLATE

[ITEM 8] HINGED DOOR

Take the **HINGED DOOR [ITEM 8]** and insert the **HINGES [ITEM 9]** into the rebated holes and secure with the screws supplied. Take the **DOOR CATCH** and position over the pilot holes in the centre of the door. Using the screws supplied secure the catch to the door.

Take the **HINGED DOOR [ITEM 8]** (complete with Hinges) and position the **HINGES SECURING PLATE** to the **BASE SHELF**.

Starting from the top of the Unit, slot the **FIRST TIER [ITEM 10]** over the extrusion on the **TOP BACK SUPPORT [ITEM 5]**, ensuring the bottom of the **TIER** is located to the **TIER SUPPORTS**.

Lock all **TIERS** into place by hooking the next **TIER** down over the front of the previous **TIER** and into the **TIER SUPPORTS**. **Please note** that the **BOTTOM TIER [ITEM 11]** has the Lower Extrusion removed to sit flush to the **MID SHELF** behind the **UPSTAND**.